



Photo by Ian Segebarth

MEXICO

The Monarch Migration & Mexico City Parks

with Pacific Horticulture | Escorted by Richard Hayden

February 1 - 6, 2022

PACIFIC
HORTICULTURE

*Each year, millions of monarch butterflies (*Danaus plexippus*) make the journey from North America to Mexico's Sierra Madre Mountains, flying thousands of miles to their winter home. The migration is one of nature's most amazing phenomena. Stand amid the fir-covered mountains and witness this awe-inspiring spectacle firsthand as the monarchs flutter, dip, and swoop overhead. You'll see countless butterflies roosting in the early morning, as well as in flight at midday, feeding on wildflowers, and drinking at streams.*

PROGRAM HIGHLIGHTS

- Hike or ride horseback to two monarch sanctuaries, where millions of individual monarch butterflies hang in clusters from the trees, drink from streams, and swirl in the air above.
- Photograph the dramatic colors of the butterflies as they hang in clusters from the trees, drink from streams, feed on wildflowers, and soar in the air above.
- Spend time exploring the colonial town of Angangueo.
- Visit the National Museum of Anthropology and History and its impressive collection from Mesoamerican civilizations.
- Explore Chapultepec Park and Alameda Central Park, one of the oldest parks in the Americas.

WHAT'S INCLUDED?

- Expert naturalist guide
- Accommodations
- Entrance fees
- Land transportation
- Meals & beverages
- Carbon offsetting
- All tips/gratuities



ITINERARY

BLD = BREAKFAST, LUNCH, DINNER



FEBRUARY 1 - MEXICO CITY

Upon arrival at the airport, you will be met and transferred to your hotel situated near the historic district. Individual arrival times into Mexico City are covered in the tour cost. Welcome dinner and program orientation at the hotel. Check in starts at 3 pm.

Overnight at Historico Central. (D)

FEBRUARY 2 - ANGANGUEO

This morning, following breakfast visit the National Museum of Anthropology & History, known as one of the most beautiful and functional museums in the world. It is the home of a valuable collection from the Mesoamerican civilizations, with two floors of exhibit galleries to explore. After your time in the museum, take a short walk in the Chapultepec Park to enjoy the beautiful green space that serves as an oasis for the citizens of Mexico City. After lunch at a local restaurant, depart for the colonial town of Angangueo, located high in the mountains in the state of Michoacan, at approximately 8,400 ft. and about 100 miles west of Mexico City. Check in at Hotel Don Bruno. *Overnight at Hotel Don Bruno. (BLD)*

FEBRUARY 3 - ANGANGUEO

After breakfast, ascend into the mountains by walking trail to approximately 10,000 ft. elevation to visit Sierra Chincua, one of several nearby Monarch sites that is more isolated than El Rosario. With a simple picnic lunch on hand, you'll have the entire day to enjoy and photograph the spectacular monarchs. Horses will be available to ride as an option instead of walking a portion of the trail to today's site (You have to pay \$100 Mexican pesos for renting a horse). This day among the monarchs is typically the most spectacular and moving experience. At the end of the day, visit the market at the site entrance

to purchase monarch crafts and food if desired. Return to Hotel Don Bruno for dinner. *Overnight at Hotel Don Bruno. (BLD)*

FEBRUARY 4 - ANGANGUEO

Located on a high mountain slope near Angangueo lies the monarch site of El Rosario. Here we visit our second monarch colony and the one most generally accessible to the public. The journey begins with a taste of colonial Mexico as you walk along a path through a small market where vendors sell a variety of food and handicrafts. Then, continue on an excellent trail system winding through the fir-covered slopes of the mountain. It is here that this large overwintering colony is located and typically contains well over 100 million adult Monarchs. Additionally, there is a nearby stream where the butterflies may fly at midday to drink water. Trail horses are available for rent to ride up the mountain if needed. Have a simple picnic lunch while enjoying this spectacular phenomenon and watching the butterflies go through their daily cycle of activities. At this time of year, they may take flight for an hour or more to water, nectar, etc., before returning to their roost on tree limbs or trunks. In the late afternoon, return from the mountains by walking trails to the picturesque colonial town of Angangueo. Free time to enjoy the hotel gardens, walk and photograph the interesting scenes and people in this beautiful little town, or to just relax in this peaceful setting. *Overnight at Hotel Don Bruno. (BLD)*

FEBRUARY 5 - MEXICO CITY

This morning, depart for Mexico City and have lunch at a restaurant near Alameda Central Park, one of the oldest city parks in the Americas. Although the park was created in 1592 by Viceroy Luis de Velasco, it was at one time the site of an Aztec marketplace. In 2012, the park went through an improvement project, including the planting of many trees and native plants. You will also have a bit of time to take in some shopping at the local Mercado before checking into your hotel for relaxation, followed by a delicious farewell dinner at Monte Cristo. This elegant restaurant has all the charm of a grand "Old Mexican Inn" of the nineteenth century and offers outstanding dishes of different regions and culinary institutions, from the Fonda, Cantina, to the most elaborate of the convent gastronomy. Your celebration this evening will most certainly be unforgettable. *Overnight at Gran Hotel Ciudad de Mexico. (BLD)*

FEBRUARY 6 - DEPART

This morning transfer to the airport for your flight home. Breakfast will be included depending on your departure time. Please be aware that you need to be at the airport three hours ahead of your scheduled departure flight time, plus the 30 minute drive to the airport (could be longer if during peak daytime traffic). Check out is a 12 noon. (B)

MEET YOUR PACIFIC HORTICULTURE ESCORT



Richard Hayden, *Pacific Horticulture Board Member*

Richard Hayden lives in Los Angeles and works for the Natural History Museum of Los Angeles County, where he is the Special Assistant to the President and Project Liaison engaged in the reimagining of the La Brea Tar Pits Museum

and 11-acre landscape. He served as the Garden Director for the Elizabeth F. Gamble Garden, a 2.5-acre public garden in Palo Alto, California from 2017 to 2019. He began his career in public horticulture as the Head Gardener for the Nature Gardens at the Natural History Museum of LAC after enjoying a 25-year career as a Los Angeles-based landscape designer. He is strong proponent and communicator of resilient, organic garden practices including soil health, wildlife habitat, climate appropriate plants, and water conservation. He has a BA in Theatre and Film from the University of Michigan and a certificate in Horticulture and Garden Design from UCLA. Richard is also an ISA-certified arborist.



LAND PRICING

\$2,825 Pacific Horticulture Member

\$2,925 Non-member

Cost is based on a minimum of 10 participants includes meals, accommodations, and activities as indicated in the itinerary, in-country transportation, full-time guide, all tips/gratuities, bottled water on the bus, carbon offset, departure tax, and donation to Pacific Horticulture.

Does not include international airfare, or items of a personal nature.

TRAVEL PROTECTION

Holbrook Travel purchases Travel Protection on behalf of all participants. These plans help provide coverage once the trip has departed and offer benefits for Baggage/Personal Effects, Accident & Sickness Medical Expenses, Emergency Evacuation and more.

Optional additional coverage is available in the form of the Group Deluxe Plan, which offers benefits for Trip Cancellation/Interruption, in addition to many other insurance benefits and non-insurance assistance services. If interested in this optional plan, we can provide you with rates and plan details.

IMPORTANT NOTE

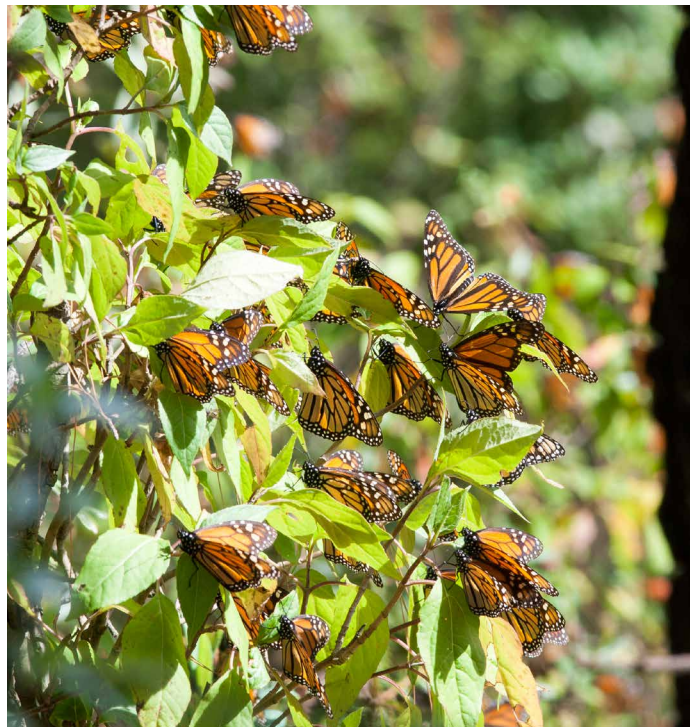
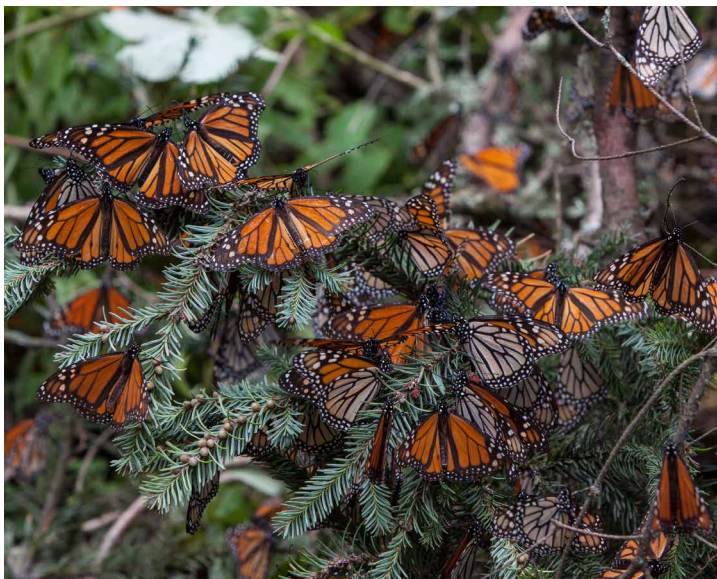
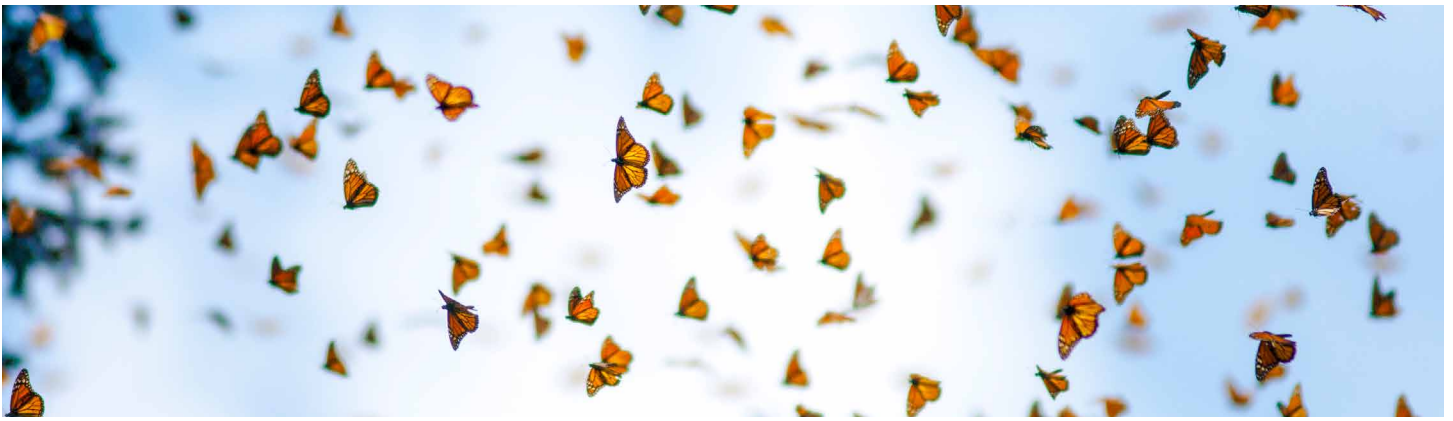
Please note that this program visits the Mexican state of Michoacán, which the U.S. State Department has long designated a Travel Advisory Level 4 due to criminal activity. Mexico City is designated a Level 2. Holbrook has operated programs to view the monarch migration in these locations for many years without incident, and we have strict safety protocols in place for all our destinations. However, it is ultimately up to each traveler to make their own assessment regarding safety and risk. Travelers are advised to visit travel.state.gov for more information.

THE FINE PRINT

Cost is based on double occupancy; single rooms available at an additional \$450 per person. A \$200 per person deposit and enrollment form are required to reserve your space on the trip. This deposit is refundable excluding a \$100 cancellation fee until October 29, 2021 at which time non-refundable final payment is due.



This program includes optional carbon offsetting with ClimateSafe. Learn more at holbrooktravel.com/climatesafe



FOR MORE INFORMATION OR TO ENROLL:

Contact Sandy Schmidt at schmidt@holbrooktravel.com or 877-907-5360
or visit holbrook.travel/pacifichorticulture-mx22

PHOTOS BY:

Ian Segebarth & Pelin Karaca